


Sundance Spas 880 Capri®

Specifications

| | | |
|--|---|---|
| Dimensions: | 69" x 82" x 30.5" (175.5 cm x 208.5 cm x 77.5 cm) |  |
| Seating Capacity: | 2-3 Adults | |
| Dry Weight: | 635 lbs (288 kg) | |
| Filled Weight (Spa Volume): | 3,262 lbs (1,480 kg) | |
| Filled Weight (Average Fill): | 2,553 lbs (1,158 kg) | |
| Water Capacity (Total Volume): | 315 US Gal (1,192 Liters) | |
| Water Capacity (Average Fill): | 230 US Gal (871 Liters) | |
| Controls: | 880 Touch Interface LCD Control, Displays Temperature, Time, Cycles and Jet/Air System Control. Offers Customizing of Filtration Cycles, Lighting, Water Temperature Setting and other features | |
| Water Delivery: | 1 TheraMax High-Flow Pump and 8-Hour Dynamic Flow Circulation System | |
| Pump 1: | North America (60 Hz): 1-Speed/2.5 HP Continuous, 11.3A Max., 56 Frame Export (50 Hz): 1-Speed/2.0 HP Continuous, 7.0A Max. | |
| Pump 2: | High Output Dynamic Flow, 8-Hour Filter/Circulation Pump (35 gpm), Programmable for Daily Start Time and Duration | |
| Total Hydrojets: | 31 | |
| Seat A Jets: | 6 Fluidix Reflex, 2 Pulsator, 4 Focus-Relief, 4 Accu-Pressure | |
| Seat B Jets: | 10 Fluidix ST, 2 Fluidix Nex | |
| Seat C Jets: | 1 Vortex, 2 Fluidix Intelli-Jet | |
| Air Blower: | High-Efficiency, 1-Speed | |
| Aromatherapy Delivery: | 8 Air Injector Jets with Quiet High Speed Air Pump | |
| Air Controls/Massage Selectors: | 2/1 (Standard air control with LED lights and massage selector with LED lights) | |
| Filter: | MicroClean® Ultra Filtration System, 130 ft² (2 interlocking cartridge filters) | |
| Water Treatment: | Automatic Brominator and Dynamic Flow Circulation System; Factory installed CLEARARRAY® Water Purification System | |
| Lighting: | Multi-Colored Sunflow LED Lighting System (1 Waterfall, 1 Main light, 2 Air controls, 1 Massage Selectors) | |
| Skirt Cabinet: | Standard SunStrong® - Available in Coastal, Mahogany, Autumn Walnut and White Oak Premium SunSide™ - Available in Modern Hardwood, Brushed Gray and Vintage Oak (Equipped with Standard Exterior Lights) | |
| Shell Colors: | North America: Platinum, Celestite (Gypsum), Sahara, Oyster (Opal), Copper Sand, Monaco, Midnight, Caribbean Surf, Sandstone, Porcelain Export: All North America Colors | |
| Handrails: | 1 Integral | |
| ComforTone Headrests: | Three, 1-Piece Gray | |
| Heater: | North America (60 Hz): Low Flow 5.5 kW with Titanium Element Export (50 Hz): Low Flow 2.7 kW with Titanium Element | |
| Electrical Requirements: | North America (60 Hz): 240 VAC@40A or 50A; Export (50 Hz): 230-240 VAC@1x25A, 2x16A (see manual for more configurations); or Suitably Rated Circuit Breaker to Comply with Local Electrical Regulations. Certain Countries May Require Dual Power Inputs; Two GFCI/RCD Breakers are Required for This Configuration. | |
| Limited Warranty*: | North America (60 Hz): 10 Years Shell, 7 Years Shell Surface, 5 Years Plumbing Component Leaks, 5 Years Equipment and Controls, 5 Years Cabinet, 5 Years Jets, 2 Years Lights, 1 Year Stereo Export (50 Hz): 10 Years Shell, 7 Years Shell Surface, 5 Years Plumbing Component Leaks, 5 Years Equipment and Controls, 5 Years Cabinet, 5 Years Jets, 2 Years Lights, 2 Years Stereo | |
| Waterfall Feature: | Adjustable Flow Rate; Colored Lighting | |
| Audio System (Optional): | Factory Installed BLUEWAVE® 2.0 Wireless Spa Stereo System with Auxiliary 3.5 mm headphone jack connection, Bluetooth® compatible, 4 premium speakers and a powered subwoofer | |
| Special Features: | MicroClean® Plus Versatile Filter Lid, Optional Filter Lid Pillow seat, Optional (Factory Installed) SmartTub™ Module - North American only | |

*(See Warranty Document for Specific Details)

Dimensions/Specifications Subject To Change Without Notice

Sundance Spas 880 Capri

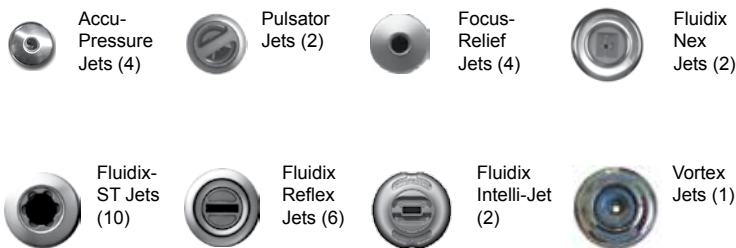
Operation/Seat Depths



- (A)** Air Control - Activates Seat A Jets (6 Fluidix Reflex, 2 Pulsator, 4 Focus Relief, 4 Accu-Pressure)
- (B)** Massage Selector - Adjusts Massage Level Between Seat A Jets and Seat C Jets + Seat B Jets
- (C)** Air Control - Activates Seat B Jets (2 Fluidix Nex, 10 Fluidix-ST) and Seat C Jets (1 Vortex, 2 Fluidix Intelli-Jet)
- (D)** Waterfall Selector [8-Hour Circ. Pump] - Controls Waterfall Output
- (E)** Sunscnt Dispenser

- Focus-Relief Jets: Work with both the blower and Jets Pump 2. The blower introduces air to the jet and the Jets Pump forces water through.

31 Total Jets



Spa Operation Subject To Change Without Notice

SEAT DEPTHS

- A = 24.25" (61.60 cm)**
- B = 26.38" (66.99 cm)**
- C = 25.75" (65.41 cm)**
- D = 26.88" (68.26 cm)**

Listed dimensions represent distance from top of acrylic to lowest point in seat. **Tolerance ± 0.5" (1.27 cm).**

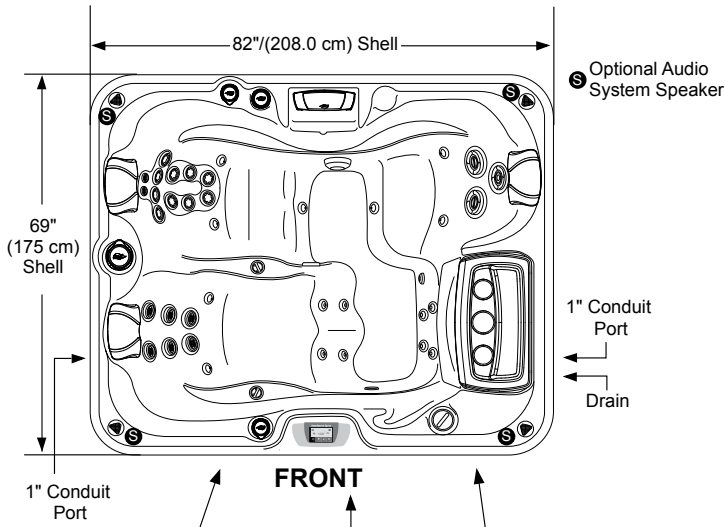


Dimensions/Specifications Subject To Change Without Notice

Sundance Spas 880 Capri

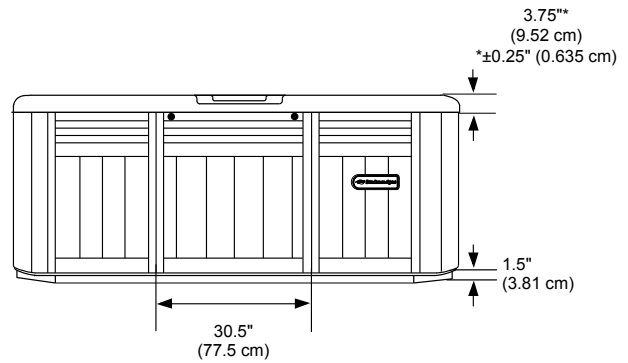
Portable Dimensions

TOP VIEW



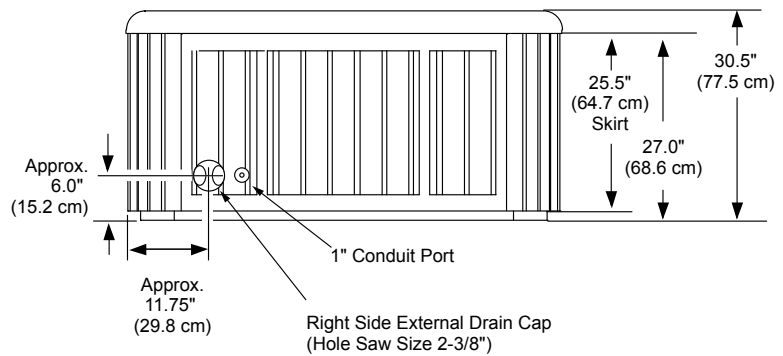
FRONT/BACK VIEW

Tolerance: $\pm 0.5"$ (1.27 cm)

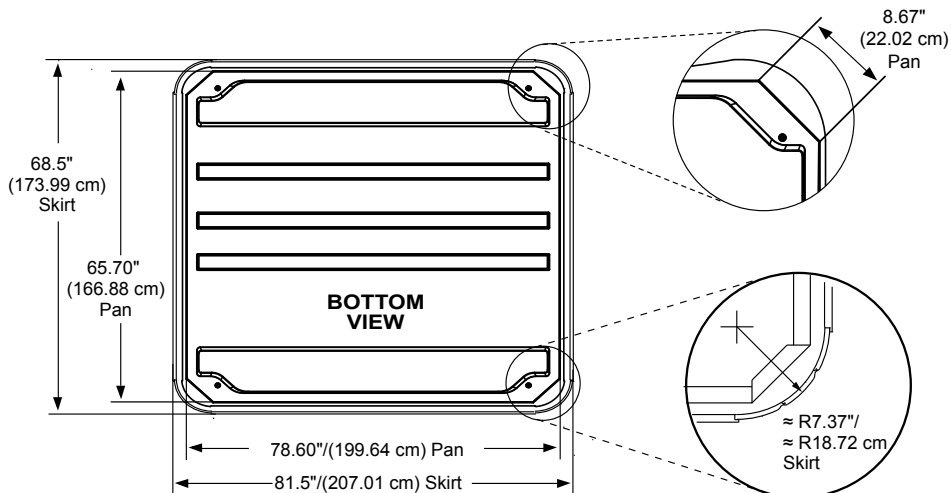


LEFT/RIGHT SIDE VIEW

Tolerance: $\pm 0.5"$ (1.27 cm)



IMPORTANT! Always measure each hot tub for exact dimensions BEFORE designing its foundational support and/or decking.



Dimensions/specifications subject to change without notice. Tolerance: $\pm 0.5"$ (1.27 cm)

Dimensions/Specifications Subject To Change Without Notice